

MCS SERVER HD VIDEO

On-Air Broadcast Server
Broadcast Time Delay
Two Channel Sports Slo-Mo

Records video using JPEG2000
video compression selectable
from 15 to 300 Mbits/sec

Frame accurate control via
RS-422 or Ethernet

Accepts Odetics, VDCP and P2
machine control protocols

Compatible with leading broadcast
automation systems

HD-SDI and SDI in/out

Up to 6 channels analog
and 8 channels digital audio

Front panel video monitoring
LCD screen (option)

Internal storage or external RAID-5
dual-redundant power supply (option)

Built on a dedicated video
hardware platform

Video transitions
fade, wipe and dissolve



MULTI-CHANNEL VIDEO SERVER

Doremi Labs' MCS-HD Server sets a new standard in video server value and performance. The MCS-HD features two record and two play independent HD video channels with shared storage and selectable compression rates.

The MCS-HD quickly integrates into a facility's existing operations. It features a front panel that mimics familiar VTR controls and is compatible with Odetics and VDCP automation protocols as well as the P2 protocol. It can record all popular high definition and standard definition video formats.

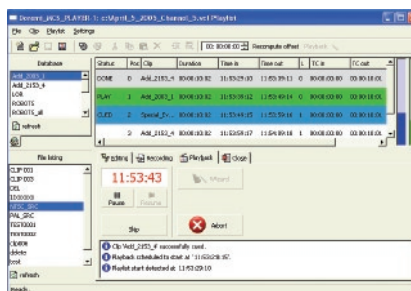
The MCS-HD features JPEG2000 video compression of the SDI and HD-SDI inputs. JPEG2000 is particularly suited to HD video compression. It can provide near uncompressed quality video using a fraction of the storage required with uncompressed systems.

LISTMAKER SOFTWARE

ListMaker provides remote management of the MCS-HD Server plus optional playlist creation capability. ListMaker simplifies the management of hundreds of hours of video recordings. It provides individual transport controls for each independent record or play channel. Each new recording can be placed in existing files (clips) or in new files and accessed concurrently by any play channel.

ListMakerPL - Playlist Control

ListMakerPL is available for additional cost for play list operation. Highlights of the video recording, based on time code in/out points, are created within each file. The highlight segments can then be assembled into live-to-air play lists and executed manually or automatically. Changes to the play list can be made while it is running on-air. Execute the play list in one of four different modes (immediate, manual, absolute time, and relative time from an offset)



ListMaker provides a transport window for each video channel.

doremi

Build on-air playlists from your video segments database. Execute the playlist in one of five different modes; immediate, manual, absolute time, relative time from an offset, and time/date.

MODES OF OPERATION

Full Front Panel Control

Switch between the different record and play channels via the corresponding channel number button below the LCD display.

Remote Control via Third Party Controllers and Software

The MCS-HD Server supports the Sony P2, Odetics and VDCP protocols supported by numerous manufacturers.

Remote Control from Doremi's ListMaker Software

ListMaker provides full support of the MCS-HD Server's multi-file capability. Manage files, create video segments and more. ListMakerPL also features extensive playlist creation capability at an additional cost.

JPEG2000 COMPRESSION

Store Both SD and HD Video Files at Different Compression Bit Rates

High Definition Compression via HD-SDI 100 to 300 Mbits/sec

Standard Definition Compression via SDI 15 to 100 Mbits/sec

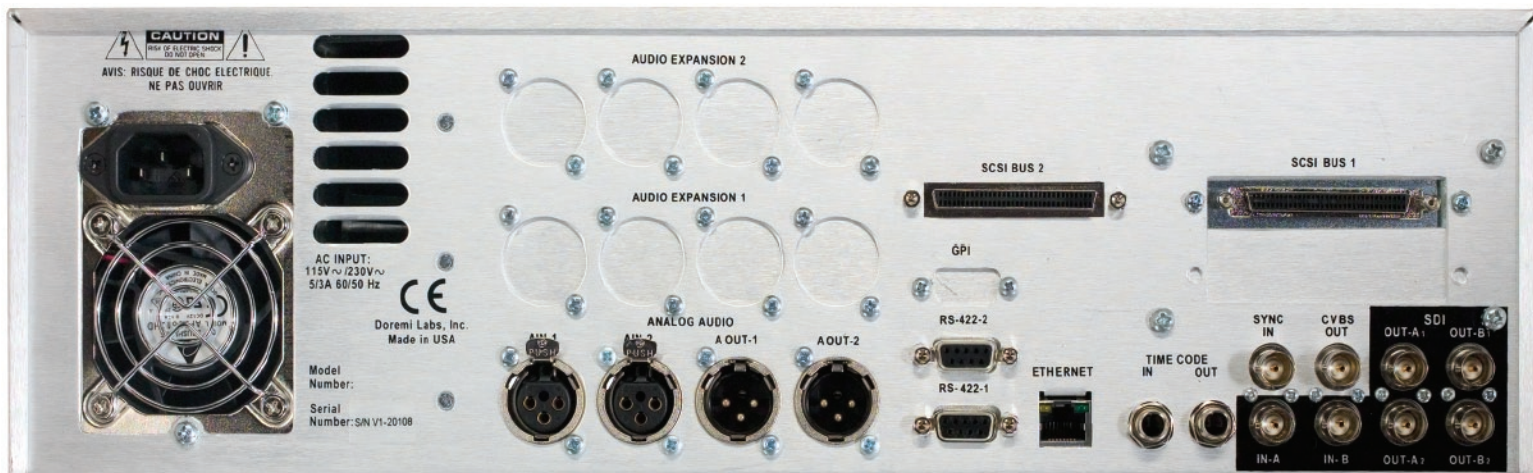
Number of simultaneous channels in operation may limit bit rate selection

SYSTEM CONFIGURATION

1 record and 1 play
with MCS-HD 1r1p



2 record and 2 play
with the MCS-HD 2r2p



MCS-HD 1r1p Rear Panel

SPECIFICATIONS

VIDEO COMPRESSION JPEG2000 from 15 to 300 Mbits/sec

VIDEO INTERFACE

Serial Digital Interface I/O

1.5Gbit/sec (SMPTE 292M, 296M and 274M)

800mVpp +/- 10%, 75 ohm, BNC

270Mbit/sec (SDI-SMPTE 259M) 800mVpp, 75 ohm, BNC

Composite Video Output

Video Sync Input Bi-level and Tri-level

AUDIO INTERFACE

Analog Audio I/O 2 channels, up to 6 channels (Option)

electronically balanced @ +4dB into 600 ohm, XLR

(24-bit A/D & D/A, 48kHz sampling - uncompressed)

AES/EBU Digital Audio I/O (Option) up to 8 channels,

balanced 10Vpp, 110 ohm, XLR

Embedded Audio on SDI I/O up to 8 channels

FORMATS SUPPORTED 625 (50Hz) and 525 (60Hz)
720p (50, 60Hz), 1080i / 1080p (24, 25, 30Hz)

CONTROL INTERFACE

Ethernet 100BaseT, Gigabit Ethernet (Option)

Time Code I/O LTC, electronically balanced +4dB into 600 ohm,
1/4" jack, VITC, ATC

Serial Control inputs 2 RS-422 using P2, Odetics, VDCP (Louth),
Pioneer DVD protocols and Panasonic RS232C

GPI 4 Input (Option)

Bi-Phase Bi-Phase input, DB-9

Power 110/115/230/240 VAC, +/- 10%, 50/60 Hz, 85 Watts

Dual Redundant Power Supply (Option)

Operating Temperature Range +10° to +40° C with rated performance

Dimensions 3RU - 5.25"H x 17"W x 15.25"D

Storage Media SCSI-equipped fixed / removable internal hard drives

External Storage via dual-SCSI to Doremi Labs' RAID5 chassis

Video Monitor LCD - front panel mounted (Option)

Specifications subject to change without notice. Some specifications and features listed are only available as part of specific packages or options.