

# HD & SD VIDEO TEST GENERATOR



## HDG-20

The HDG-20 portable video test generator offers an extensive list of advanced features at an affordable price.

The HDG-20 provides still and moving test patterns in SD and HD formats at full broadcast quality. It also outputs audio tone, time code and closed caption characters. It even features a dual-link 2k resolution video output and an optional sync input (for genlock).

The HDG-20 fits in the palm of your hand and has four buttons to operate the menu displayed on its bright LCD screen. RS-422 firmware upgrade provides for hassle free updates.

Doremi Labs designed the HDG-20 to offer video professionals a low cost portable test generator to calibrate and test video equipment and displays at broadcast, post production, concert, home theater, and R&D facilities.

Multi-Format Output  
for HD and SD Video

Still and Moving  
Test Patterns

Audio Tone, Time Code  
and Closed Caption

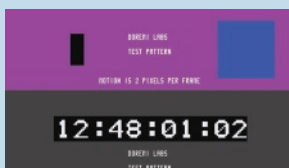
Dual Link 2k  
Video Output

Sync Input (Option)

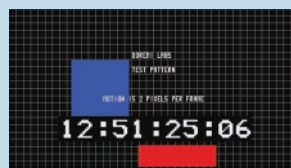
Palm Size Design

5-18 Volt Range for  
Connection to Battery Packs

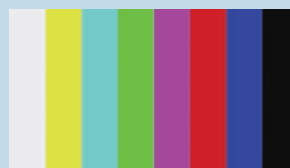
Four examples of HD Video output  
Displayed with close caption, moving squares and time code



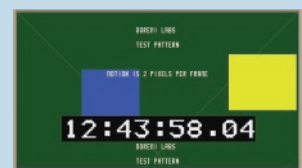
Check Field



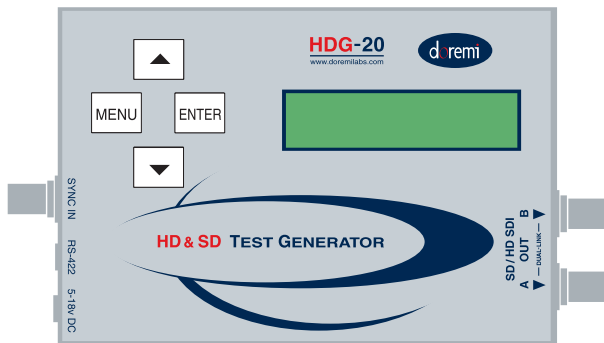
Cross Hatch



100% Bars



Borderline



## SPECIFICATIONS

### STILL PATTERNS

100% Color Bars  
 15% Grey and 25% Grey  
 Black  
 Black to White Gradient  
 Borderline  
 Check Field (equalizer / pll)  
 Cross Hatch  
 Full White, Red, Green and Blue  
 Grey Levels -16 bars: Grey/Red/Green/Blue  
 Moiré Circle Effect / Zone Plate  
 Random Noise  
 SMPTE Bar  
 Target  
 Vertical Lines / Horizontal Lines  
 Multiburst  
*Random Generator for all still patterns*

### MOVING PATTERNS

*Can be combined with still patterns  
 above for hundreds of variations*  
 1 or 2 moving squares with  
 shape and color change effect  
 Full Motion of still pattern  
 Snow  
 Scrolling Title  
 Speed control of motion  
 Inverse effect with still pattern

### AUDIO TONE GENERATOR

1kHz Sine Wave embedded on SDI  
 4 Channels on 4 Groups  
 Audio Level Settings (8 Values)  
 Audio Synchronization Mode

### CLOSED CAPTION

CC as ancillary data in video stream  
 CC to the CEA-708 standard (Option)

### TIME CODE GENERATOR

TC as ancillary data in video stream  
 Drop or Non-Drop Frame  
 On Screen Burn in Window

### VANC GENERATOR

Inserts a counter packet into VANC

### VIDEO INPUT

Sync Input (Option)

### VIDEO OUTPUT

Two BNC connectors provide either:  
 -Two identical serial digital (SDI) outputs  
 -Dual Link serial digital output (YPbPr/RGB)  
*Pair with Doremi's HDVI-20 for DVI output*

### Formats Supported

NTSC & PAL  
 720p - 60, 59.94, 50Hz  
 1080i / 1080p - 30, 29.97, 25, 24, 23.98Hz  
 2048x1080p & sf - 24, 23.98Hz

Standards: SMPTE 125M, 274M,  
 296M, 372M, 292M

Bit Rate: 1.485 Gb/s, 1.4835 Gb/s, 270Mb/s  
 Resolution: 10bit

### INTERFACE

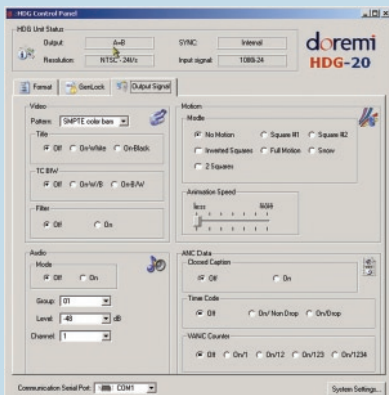
Two line LCD with menu controls  
 Save settings to memory option

### OTHER

RS-422 for remote control and  
 firmware upgrades

### GENERAL

5 - 18 volts (screw-on connector)  
 External Adapter: 100-240VAC 50-60Hz  
 5.4" x 3.7" x .8" (138mm x 93mm x 22mm)



## HDG Control Software

Remote control software for the PC or MAC. Connects via a RS422 serial connection. It provides an easy to use graphical interface to select all HDG-20 settings. Current active settings are always on display above the three function tabs.

## ORDERING INFO

HDG-20	HD & SD Video Test Generator
SyncHDG	Genlock option for the HDG-20
CEA-708	Closed Captioning Option to the CEA-708 standard

doremi